



**Roach Ag. Marketing, Ltd.**

*Helping Farmers Since 1978*

# **Growing World Grain Demand**

Presented by: John Roach

# Disclaimer:

Futures/options trading involves substantial risk of loss and trading may not be suitable for all investors. You should fully understand those risks prior to trading. Past financial results are not necessarily indicative of future performance.

**This material should be construed as the solicitation of an offer to sell or the solicitation of an offer to buy the derivative(s) noted in any jurisdiction where such an offer or solicitation would be legal.**

These materials have been created for a select group of individuals, and are intended to be presented with the proper context and guidance. Information contained herein was obtained from sources believed to be reliable, but is not guaranteed as to its accuracy. These materials represent the opinions and viewpoints of the author, and do not necessarily reflect the viewpoints and trading strategies employed by Roach Ag Marketing, Ltd.

Roach Ag. Marketing is not responsible for any redistribution of this material by third parties, or any trading decisions taken by persons not intended to view this material. Information contained herein was obtained from sources believed to be reliable, but is not guaranteed as to its accuracy. Contact Roach Ag. Marketing designated personnel for specific trading advice to meet your trading preferences. These materials represent the opinions and viewpoints of the author, and do not necessarily reflect the viewpoints and trading strategies employed by Roach Ag. Marketing.



## USDA Supply and Demand for World Soybeans

December 10, 2013

Year	Beginning Stocks	Production	Total Utilization	Usage Growth	Days of Supply
2001/02	30.71	184.88	183.96	107.1%	63.8
2002/03	33.22	197.08	190.59	103.6%	77.9
2003/04	42.43	186.75	190.03	99.7%	74.5
2004/05	38.80	215.75	205.16	108.0%	84.5
2005/06	47.46	220.44	215.21	104.9%	90.0
2006/07	53.11	237.44	225.52	104.8%	101.5
2007/08	62.96	221.21	229.74	101.9%	84.1
2008/09	51.42	211.95	221.34	96.3%	70.2
2009/10	42.95	261.08	238.01	107.5%	92.0
2010/11	60.76	263.90	251.63	105.7%	101.7
2011/12	71.80	239.15	256.96	102.1%	78.3
2012/13	55.15	268.02	258.30	100.5%	85.0
2013/14	60.18	284.94	270.87	104.9%	95.2

The world will likely need 2 to 4% more soybeans in 2014-15 assuming average growth

Average Usage Growth per year

Since 2001-02 103.6%  
 Since 2003-04 103.3%  
 Since 2008-09 102.8%

	Production	Total Utilization	Usage Growth	Days of Supply
2001/02	30.71	184.88		63.8
2002/03	33.22	197.08		77.9
2003/04	42.43	186.75		74.5
2004/05	38.80	215.75		84.5
2005/06	47.46	220.44		90.0
2006/07	53.11	237.44		101.5
2007/08	62.96	221.21		84.1
2008/09	51.42	211.95		70.2
2009/10	42.95	261.08		92.0
2010/11	60.76	263.90		101.7
2011/12	71.80	239.15		78.3
2012/13	55.15	268.02		85.0
<b>2013/14</b>	<b>60.18</b>	<b>284.94</b>	<b>104.9%</b>	<b>95.2</b>

That's 5.4 to 10.8 million tons more than the 2013 N. Hem. And 2014 S. Hem. harvest



## USDA Supply and Demand for World Coarse Grains

December 10, 2013

Year	Production	Imports	Total Utilization	Usage Growth	Days of Supply
2001/02	891.26	103.66	903.95	102.7%	70.9
2002/03	872.34	104.11	901.34	99.7%	67.1
2003/04	912.87	100.88	942.69	104.6%	54.3
2004/05	1015.21	101.19	976.83	103.6%	67.0
2005/06	977.83	104.50	991.19	101.5%	60.9
2006/07	984.76	113.07	1011.79	102.1%	50.1
2007/08	1078.73	126.71	1056.45	104.4%	55.87
2008/09	1110.24	110.52	1079.49	102.2%	66.15
2009/10	1115.55	115.15	1114.56	103.2%	63.98
2010/11	1099.55	115.73	1131.01	101.5%	53.58
<b>2011/12</b>	<b>1151.28</b>	<b>128.09</b>	<b>1152.18</b>	101.9%	<b>52.33</b>
<b>2012/13</b>	<b>1132.51</b>	<b>127.17</b>	<b>1133.29</b>	98.4%	<b>52.95</b>
<b>2013/14</b>	<b>1256.08</b>	<b>138.04</b>	<b>1223.57</b>	108.0%	<b>58.74</b>

The world will likely need 2 to 4% more Coarse Grain Grains in 2014-15 assuming average growth

## Average Usage Growth per year

Since 2001-02 102.6%  
 Since 2003-04 102.8%  
 Since 2008-09 102.5%

Imports	Utilization	Growth	Supply		
103.66	903.95	102.7%	70.9		
		7%	67.1		
		5%	54.3		
		5%	67.0		
		5%	60.9		
		1%	50.1		
		4%	55.87		
		2%	66.15		
		2%	63.98		
		101.5%	53.58		
<b>2011/12</b>	<b>1151.28</b>	<b>128.09</b>	<b>1152.18</b>	<b>101.9%</b>	<b>52.33</b>
<b>2012/13</b>	<b>1132.51</b>	<b>127.17</b>	<b>1133.29</b>	<b>98.4%</b>	<b>52.95</b>
<b>2013/14</b>	<b>1256.08</b>	<b>138.04</b>	<b>1223.57</b>	<b>108.0%</b>	<b>58.74</b>

That's 24 to 48 million tons more than the 2013 harvest



## World Corn Production

Country or Region	2012/13 estimate	2013/14 forecast	Change from September	Change from 2012/13
	<i>Million Tons</i>		<i>Percent</i>	<i>Percent</i>
World	862.7	962.8	<b>0.6</b>	<b>11.6</b>
United States	273.8	355.3	<b>1.1</b>	<b>29.8</b>
Foreign	588.9	607.5	<b>0.4</b>	<b>3.2</b>
Argentina	26.5	26.0	<b>0.0</b>	<b>-1.9</b>
Brazil	81.0	70.0	<b>-2.8</b>	<b>-13.6</b>
Mexico	21.6	21.7	<b>-1.4</b>	<b>0.5</b>
Canada	13.1	13.1	<b>-0.8</b>	<b>0.3</b>
European Union	58.9	65.3	<b>0.4</b>	<b>10.9</b>
FSU-12	32.4	45.1	<b>6.4</b>	<b>39.1</b>
Ukraine	20.9	29.0	<b>0.0</b>	<b>38.6</b>
Russia	8.2	11.5	<b>27.8</b>	<b>40.0</b>
South Africa	12.2	13.0	<b>0.0</b>	<b>6.6</b>
China	205.6	211.0	<b>0.0</b>	<b>2.6</b>
India	22.2	23.0	<b>2.2</b>	<b>3.5</b>



## 2013/14 South American Corn Production

<u>Country</u>	<u>Current Estimate</u>	<u>Maximum</u> million metric tons	<u>Minimum</u>	<u>2012/13 Production</u>
Brazil	68.5	73.0	66.0	81.0
Argentina	23.0	25.0	20.0	26.5
Paraguay	2.5	2.8	2.1	3.0
Bolivia	0.7	0.8	0.6	0.7
Uruguay	0.4	0.5	0.3	0.4
Total	95.1	102.1	89.0	111.6

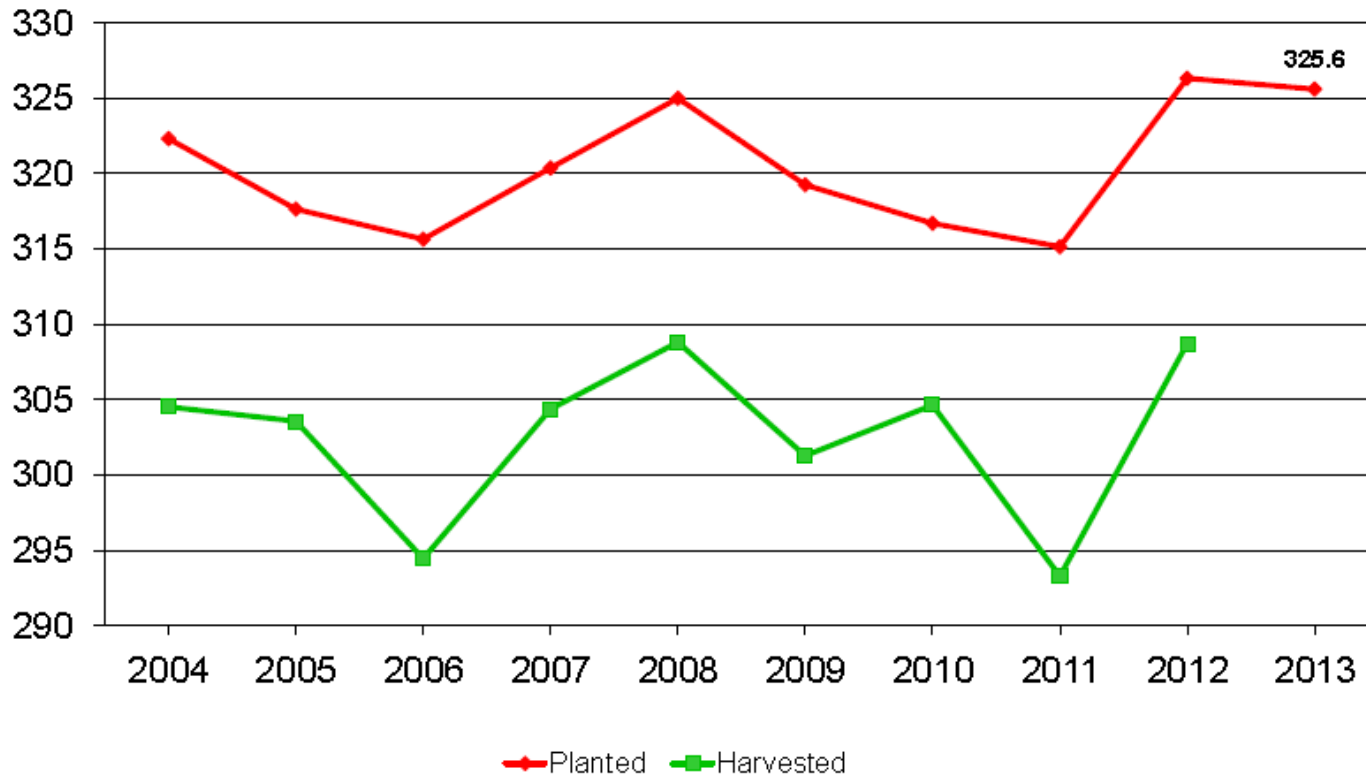




# U.S. Principal Crop Acres



Million acres



USDA-NASS  
6-28-13

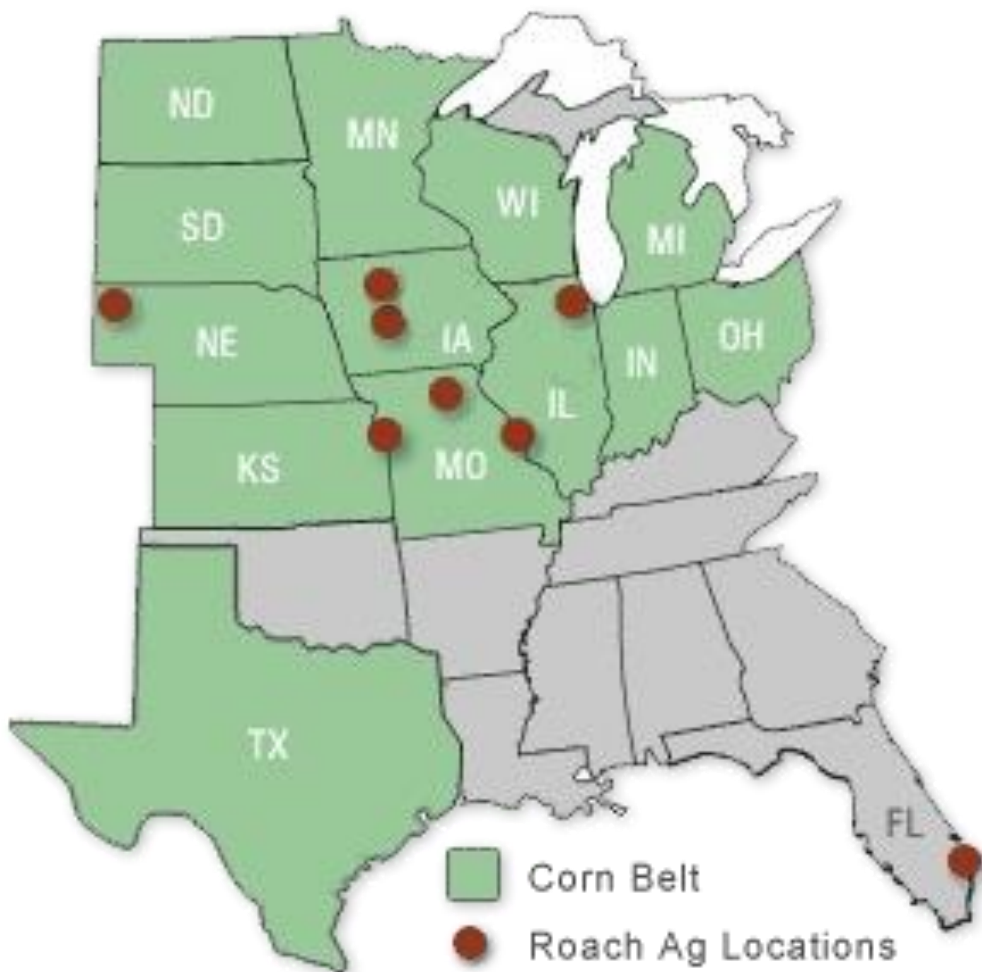


Roach Ag. Marketing, Ltd.

Helping Farmers Since 1978

Page 10

Our Job is Helping Farmers  
Sell Their Grain at Price Peaks



Roach Ag Marketing, Ltd.

568 East Yamato Road  
Suite 200  
Boca Raton, FL 33431

+1-561-994-9394

[jroach@roachag.com](mailto:jroach@roachag.com)  
<http://www.roachag.com>